



CABARRUS COUNTY
America Thrives Here



CALL FOR ARTISTS PUBLIC ART OPPORTUNITY

Cabarrus County Courthouse Expansion

SIGNATURE ARTWORK - REQUEST FOR QUALIFICATIONS (RFQ)

PUBLIC ART BUDGET: \$350,000

DEADLINE: MONDAY DECEMBER 20th, 2021, 3:00 P.M. EDT

ESTIMATED TIMELINE:

- Qualifications Due:Monday, December 20, 2021 by 3:00 p.m. EDT.
- Panel Review:Dec. 2021 - Jan 2022
- 2021 Semi-Finalist Interviews:Late January 2022
- Three Finalists to develop proposals: February 2022
- Artists Present Proposals: March 2022
- Artist(s) Selected by: April 2022
- Artwork installed: November 2022

All dates subject to change-

SUMMARY

Cabarrus County, North Carolina is seeking artists or artist collaborations to create innovative, original, and site-specific artwork for the Cabarrus County Courthouse Expansion that is currently under construction in downtown Concord, NC.

The Art Selection Committee for this project is seeking an artist or artist team who can understand and express, in a suspended, permanently-installed, large scale piece, the Courthouse's role in providing sound and fair justice. The location of the art will be in the main public lobby, where high windows afford views of the artwork from outside the building on three sides, as well as inside.

BUDGET/COMMISSION

The total public art budget for the Project, including all aspects of design, fabrication, transport and installation, is **\$350,000**. One (1) to three (3) finalists will each receive a \$2,500 stipend to cover design costs for their proposal and travel/ presentation.

PROJECT DESCRIPTION

When completed, the new Cabarrus County Courthouse will be a 313,000 SF court facility that includes a new 240,000 SF addition to the existing 1975 courthouse.

Together with the new construction, the existing 73,000 SF facility will also undergo complete interior renovation and repurposing to fulfill long-term, multi-generational space requirements.

As noted in the Designers' Narrative for the project (below), "While the existing courthouse fronting Union Street will be completely renovated, a new addition and public entry [off Means Ave Pedestrian Plaza] will reshape the identity of the courthouse campus. The intentional siting of this new primary entry is the defining element of the concept..."

Similarly, the artwork commissioned for this project will reshape and help define the perceptions of those entering or passing the Courthouse, and frame a new experience of a 'house of justice.'

The artwork will not only complement the architecture of the building, and provide an attraction - and distraction - for those entering; it shall also help shift mindsets. More details about the Courthouse Expansion Project, and the services and role of the courts, is below for additional context.

ELIGIBILITY

Open to all U.S. artists who meet qualifications.

/ Cabarrus County Courthouse Expansion

CONCORD, NORTH CAROLINA

PERSPECTIVE
View from County Government Building



ART REQUIREMENTS

The artwork will be sited overhead in the public lobby, prior to entrance into the security queuing area. The artwork must be durable, low maintenance, and appropriate to the location. This is to be an original, site-specific artwork; replications of previous works are not desired.

The committee prefers materials that are durable and relatively maintenance-free; artworks made of fabric, paper or other materials that are likely to be difficult to clean, or to break or decompose, are not appropriate for this project.

Artists are sought who can conceive, design, execute and install a completely original, seminal work, that is eye-catching and iconic while also demonstrating keen sensitivity to the varied contexts of experiences in which those who encounter it, could be immersed.

The Art Selection Committee desires that the public art shall evoke the County Courthouse's role in providing sound and fair justice. The Design Team of Architects spent time on the ground understanding the history and context of the County to inform their choices of structure and movement, light and materials. Building upon that, the Art Selection Committee has discussed what role this artwork can play. Certain desired emotional responses have been carefully considered and articulated. Of note, are the following key terms:

- Balance
- Texture
- Calm
- Transparency
- Equity & Equality
- Fairness & Justice
- Inclusion
- Interconnectivity; the woven connection of people and place

Conceptually, this artwork(s) should:

- *Create Interest and Shift Assumptions;*
- *Provide a 'stopping moment' for those at high emotional level, to reconsider, re-frame and breathe;*
- *Inspire a sensation of calm, or beauty, or of connection, etc.; i.e. impart a sense of one or all the key words above.*

Please see the '**Background**' section below, for more in-depth information on the Courthouse Expansion.

SUBMISSION GUIDELINES

PLEASE READ CAREFULLY AND MAKE SURE ALL CRITERIA ARE MET.

Application packaging

Applications must be by electronic submission only, via upload & submission form on the Submission website; instructions and link, below. Do not email your application. No paper or hard-copy applications will be accepted.

To apply: Please submit all uploaded materials in PDF Format; *Please read instructions carefully.*

Images and their info should be all in ONE (1) single PDF document, not to exceed total size of 25 MB;

Letter of Interest can be entered as text (pasted or typed) into the relevant box within the Submission form on the online Submission Site, linked below;

Resumé should be a separate, single PDF document (multiple pages are fine, but all in ONE (1) PDF doc.), 5 MB or smaller.

All should be uploaded and/or entered in to the County's Submission Form Website, given below. **DO NOT EMAIL** your application. For any questions or technical difficulty, see 'Contact Person' below.

Images - To be considered for this project, the artist must submit up to ten (10) images of previously completed artwork. All examples should represent work completed within the last 5 years. **EACH** image must be labeled with the following, in a sidebar next to each image (do not obscure images with overlaid text); *make sure each photo occupies one slide/ page:*

- Artist Name
- Image Number
- Title of the Work
- Approximate Size and Weight of Work
- Medium/materials of construction
- Total Art Project Budget
- Location of Work
- Year Completed

Letter of Interest - submit a short statement (500 words max) addressing artist's conceptual approach, potential approach to the project in question, and the relationship of the work shown to

the requirements of this particular project. This is not a request for a specific proposal; do not include drawings or plans as they will not be considered. **Not to exceed 500 words.**

Resumé - submit a current professional resumé that outlines your professional accomplishments as an artist, including exhibition history, public collections, public commissions and site-specific experience. Catalogs and reviews may be included. Include current contact information.

DEADLINE

Application Deadline: Monday, December 20, 2021 by 3:00 p.m. EDT

Applications must be received by this date and time. The Art Selection Committee will not review incomplete or late submissions.

ADDITIONAL INSTRUCTIONS AND INFORMATION:

Maintenance and Durability - All applicants are requested to consider the issues of long-term conservation and maintenance of public art. Public Art Projects should be fabricated of highly durable, low-maintenance materials. Artists' proposals and awarded contracts will be reviewed by the Cabarrus County Infrastructure and Asset Management department.

Project Evaluation -The Courthouse Public Art Selection Committee (CPASC) supervises the selection process and is responsible for final approval on all art selected for the public lobby. The CPASC includes members of the Courthouse staff, County Officials, Cabarrus County staff, members of Cabarrus Arts Council, and members of the design team. The CPASC is responsible for reviewing the site, establishing criteria and writing a Call for Artists, reviewing applications, short-listing and interviewing finalists.

Selection Process – Up to five (5) artists will be selected for interviews. Interviews will be in person but if the artist is unable to travel, virtual interviews will be arranged. Travel costs are to be covered by the artist and will not be reimbursed by Cabarrus County. Artists will be selected for interviews based on materials submitted- please see Submission Guidelines.

One (1) to three (3) artists will be short-listed after the interviews and asked to prepare proposals. Any

proposal request will be compensated with an honorarium of \$2,500. These artists will receive more specific information about the project and will have the opportunity to talk to a member(s) of the CPASC prior to the proposal submission. One artist/ artist team will be selected as finalist for the project. The nominated finalist and proposal will be presented to the Cabarrus County Board of Commissioners. If no proposal is approved, the CPASC reserves the right to re-open the search for artists or take whatever action is deemed appropriate to complete the selection process.

Criteria- Artist applications will be judged on past work as illustrated in images, including all aspects of the following: creative concept, use and understanding of materials, quality of fabrication, appropriateness of site-specific works to the context of their environment, scale of works completed, and suitability of the artist's work and style to the context and demands of this project.

Also considered will be an artist's professional experience, including experience creating public art or other site-specific projects, exhibition history, and art education background. The relevance and quality of the Letter of Interest may also be a factor.

The artist must demonstrate the ability to read, comprehend, and respond to all the requirements listed in the call to artists.

Artists should only display original and unique works designed and created by themselves. If displaying artworks created in a team collaboration, please be sure to state what part of it you were responsible for.

Artists should document experience and abilities with regards to coordination with sub contractors, logistics, equipment usage, and collaboration with teams. All necessary subcontracted labor, equipment, and transportation is to be handled by the contracted artist, within the contract budget.

Submission Site:

<https://cabarruscounty.us/resources/courthouse-expansion-call-for-public-art-rfq>

Contact Person: If you encounter any technical difficulties, or have any questions, you may contact Cabarrus County Area Manager of Operations, Kyle Bilafer at kdbilafer@cabarruscounty.us.

ARTWORK LOCATION

/ Cabarrus County Courthouse Expansion Lobby Public Art Installation

37'-4" Long X 8'-6" High



Diagrams illustrate probable area limitations for interior public art. Installations are not required to extend to the maximum limits of illustrated area.

/ Cabarrus County Courthouse Expansion Lobby Public Art Installation

28'-0" Wide X 8'-6" High



/ Cabarrus County Courthouse Expansion

CONCORD, NORTH CAROLINA

PERSPECTIVE
Entry Lobby Interior



/ Cabarrus County Courthouse Expansion

CONCORD, NORTH CAROLINA

PERSPECTIVE
Entry Lobby Interior



8,885 Cubic Feet



BACKGROUND

Design Narrative Of The Cabarrus County Courthouse Project

Representing a significant architectural development within the urban core of Concord, and expounding on the social and civic legacy of the courthouse site, the new Cabarrus County Courthouse will take a bold first step in contributing to the continued revitalization of the downtown. While the existing courthouse fronting Union Street will be completely renovated, a new addition and public entry will reshape the identity of the courthouse campus. The intentional siting of this new primary entry is the defining element of the concept and establishes a new public plaza space that honors the historic notion of courthouse entry while informing future redevelopment North along Church Street and beyond.



The new Cabarrus County Courthouse aims to weave the building into the existing fabric of downtown Concord in order to create a new interconnected composition that is intimately familiar to the residents of Cabarrus County and is contextually tied to its place and time. The materials, colors, and forming of the existing courthouse subtly inform the exterior design of the new addition through a critical reinterpretation to create a new architectural language that both honors the existing building and establishes the new addition within a contemporary setting. The new addition and existing courthouse are woven together through the use of similar materials and detailing, and the new public plaza weaves the building into the larger downtown fabric by providing pedestrian friendly open spaces that directly connect Union and Church Streets.

As a way of further instilling a sense of cultural familiarity to the residents of Cabarrus County, the region's legacy of the textile industry serves as a subtle concept in the forming of the Courthouse's architectural character. The patterns, materials, technologies, and processes of the textile industry abstractly inform the architectural character of the project through such details as delicate "loom" sunshades, "shuttlecock" public entry, the "warp and weft" of window framing patterns, and interior linear wood ceiling "threads." Woven and overlapping flooring patterns can be seen both in the interior public spaces as well as in the exterior public plaza.

/ Cabarrus County Courthouse Expansion

CONCORD, NORTH CAROLINA

PERSPECTIVE
Means Plaza



What Goes On In the Cabarrus County Courthouse

The Cabarrus County Courthouse provides workspace for approximately 200 County and State employees each day. In addition to employees, an average of 750 to 1,000 citizens, attorneys, bail bondsmen, and law enforcement officers enter the building to address a variety of legal business, as varied as can be:

- Pricing or purchasing foreclosed real estate
- Paying speeding tickets
- Preparing a witness or crime victim to testify in a trial
- Administering the estate of a deceased family member
- Meeting with an attorney before a hearing
- Hearings on divorce, child custody or other family law issues
- Criminal misdemeanor or felony hearings
- Cases involving abused or neglected children
- Paying civil judgments or criminal court costs
- Mediating child custody disputes
- Participating in Teen Court
- Attending a continuing education course for legal or law enforcement professionals
- Meeting with a probation officer or juvenile court counselor
- Submitting a request for records, criminal or civil
- Establishing a guardianship for a loved one
- Providing DNA samples to law enforcement
- Arbitration of a small claims issue or civil dispute

At any given time, Courthouse patrons can range in age from toddlers to elderly people, from all walks of life and all segments of society. Many of those people are experiencing strong emotions before and after their business in the courthouse is completed. All of them are seeking justice and order. Many of the patrons of the Courthouse are experiencing a traumatic event, which may involve the loss of their home, the breakup of their family, or the loss of their liberty due to incarceration. There is at least some element of coercion in their presence at the courthouse because most people do not want to confront these emotions willingly. Some patrons return repeatedly due to the nature of their case and some only enter the building once in their lives. The Courthouse is the closest modern approximation to the public square of old, where all members of the community stated their business publicly to be addressed by the governing body of that time.

The courthouse houses the following courts, judicial and support offices:

- Superior Court
- District Court
- Judges' Offices
- District Attorney Offices
- Community Corrections Office Suite
- Juvenile Justice Office
- Guardian Ad Litem Offices

Additionally, the courthouse provides space for attorney/client consultation, witnesses, mediation proceedings, and jury assembly.

What the Expansion Provides

The space planning provides for the long-term growth of the courts anticipated to match the population growth and caseload trends of Cabarrus County. When construction is complete, it will include twelve fully functioning courtrooms to meet the current requirements of the Superior Court, District Court, and Clerk of Courts. Shell space will be included within the facility to accommodate as many as seven additional courtrooms, and provisions for long-term staff growth for each judicial and support office is included in each office suite.

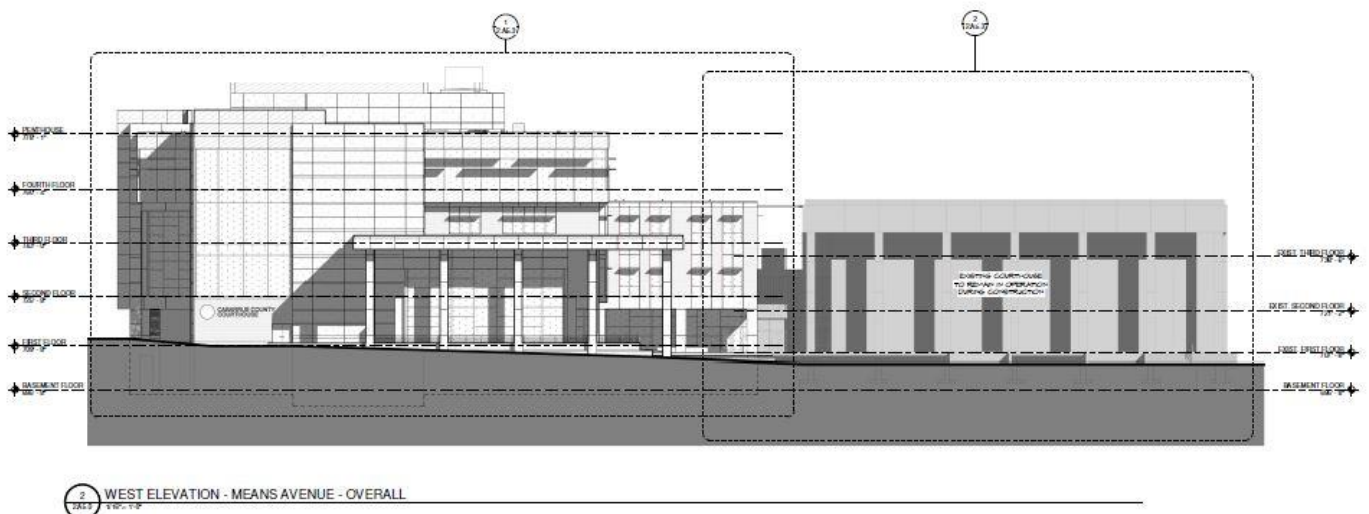
The new courthouse will enable a modernization of court operations and a greater efficiency of case processing. The facility will ultimately promote a smarter allocation of court staff and resources resulting in a focus on more serious criminal cases and thus public safety.

The design incorporates spatial organization and state-of-the-art security technology features to provide efficient operations, management, and safety to the public, staff, and court participants. It includes modern courthouse zoning techniques and circulation systems. A limited amount of secure, below-grade parking is included and linked to dedicated staff circulation systems.

The courthouse is being constructed in three phases allowing continued court operations in the 1975 courthouse. The initial phase included partial demolition, site utilities, and site excavation to be completed and is currently complete. The 240,000 SF second phase is to be completed in late 2022 and is currently underway. Upon occupancy of the new courthouse in early 2023, the third phase of the project will include the renovation of the 1975 courthouse with final completion in the spring of 2024.

The estimated project cost is \$130 million including construction cost of \$110 million and soft costs of \$20 million.

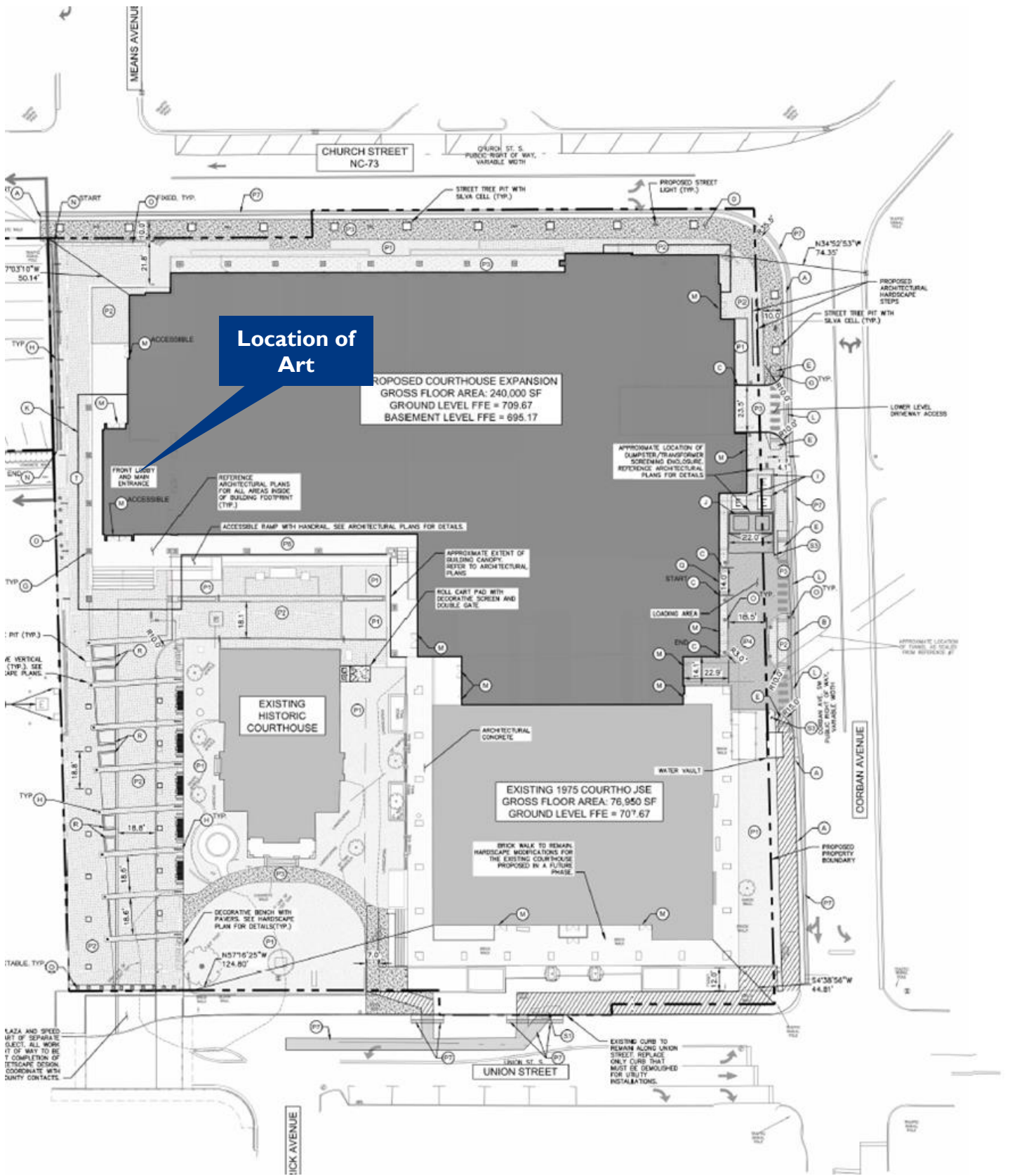
Additional Images: Site Photos, Building Elevations, and Terrazzo





Public Lobby Terrazzo Floor Color-Pattern Selections

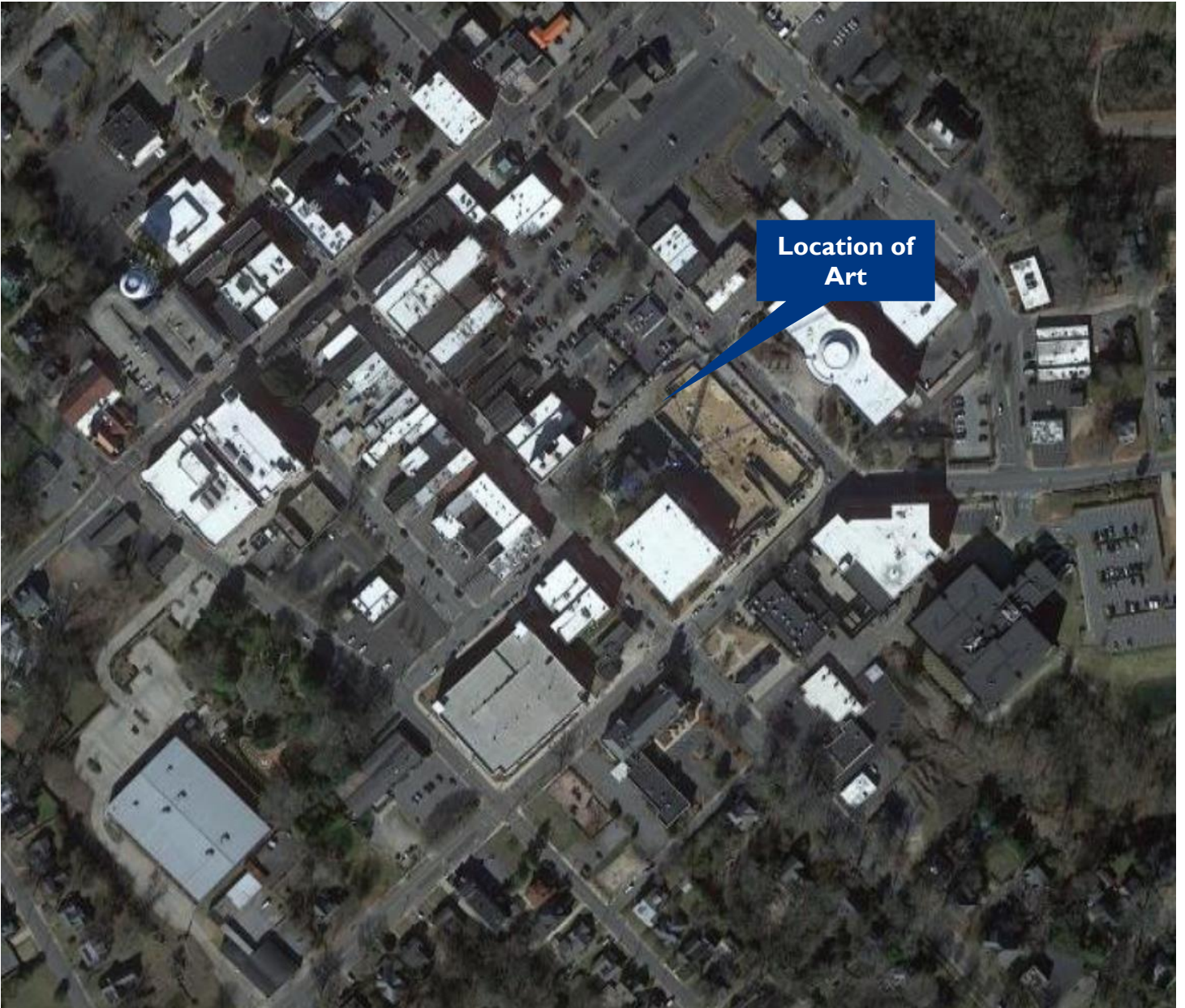




Location of Art

PROPOSED COURTHOUSE EXPANSION
 GROSS FLOOR AREA = 240,000 SF
 GROUND LEVEL FFE = 709.67
 BASEMENT LEVEL FFE = 695.17

EXISTING 1975 COURTHOUSE
 GROSS FLOOR AREA = 76,950 SF
 GROUND LEVEL FFE = 707.67



Address: 61 and 77 Union Street South, Concord, NC 28025